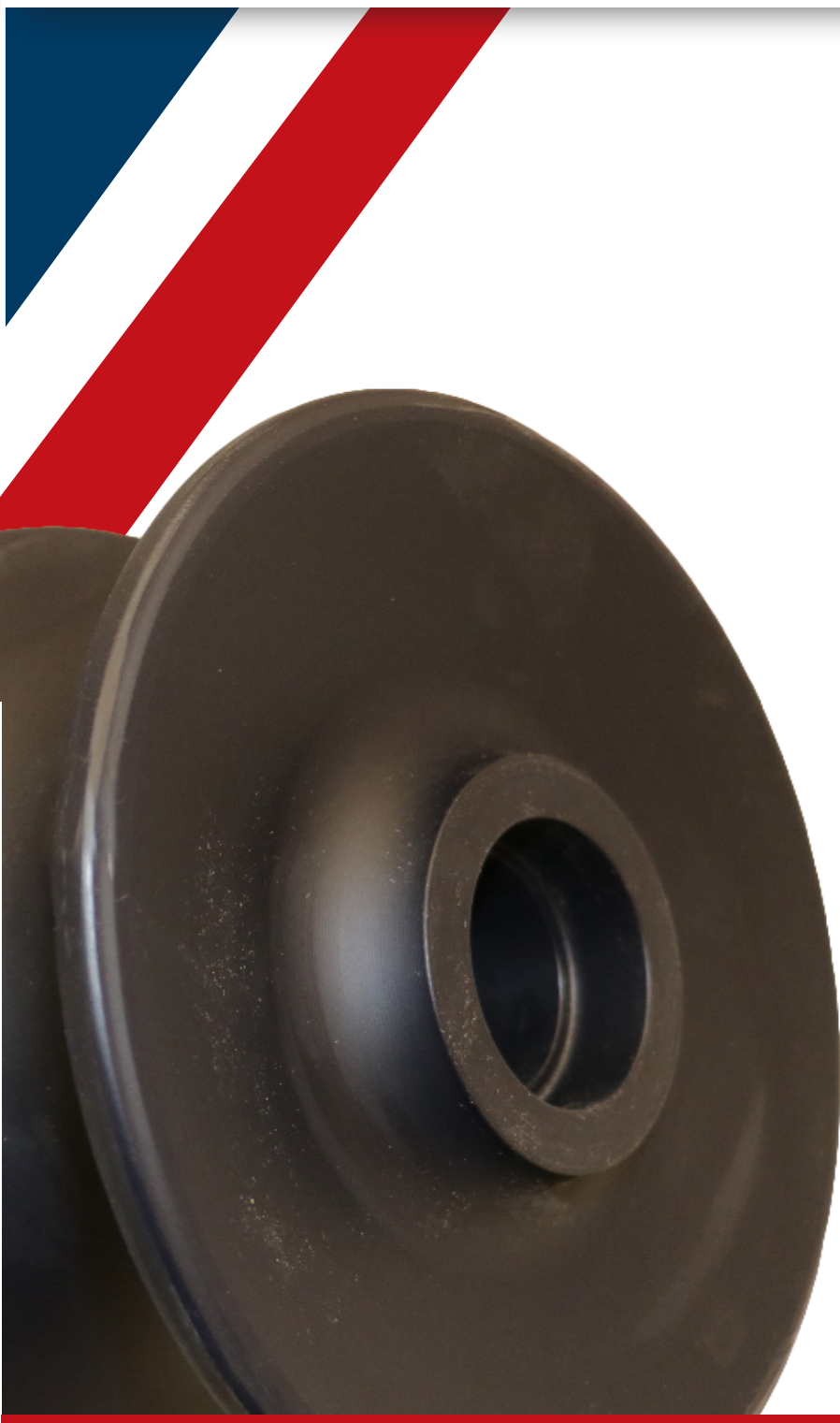




**NYLATECH**  
MEETING TODAY'S CAST NYLON NEEDS

# NYLON



**Absorbs Impact**

**Absorbs Noise**

**Self-Lubricating**

**Eliminates Galling**

**High-load Capacity**

**High Tensile Strength**

**Minimizes Maintenance**

**FDA, USDA, & CFIA Grades**

**1-800-506-9566**

***info@nylatech.com | www.nylatech.com***





## Nylatech™ NATURAL ○

Nylatech™ Nylon Natural offers the excellent abrasion resistance and dimensionally stable qualities inherent of all cast nylon grades. In addition, Nylatech™ Natural is U.S.A F.D.A approved making it ideal for components in the food processing industry.

STANDARD COLOR: Natural [White]

### TYPICAL APPLICATIONS:

Wear strip, channel, diverter arms, bearing blocks, scraper blades, wear rails, star wheels, chute liners, hopper liners, bunk pads, slider blocks, light duty pulleys, dock fenders/pads, metal detector troughs, trimmer lugs, sprockets, conveyor flights, wear shoes/guides, forklift hose sheaves, rollers, hold down wheels, slides, cutting boards, outrigger pads, etc.

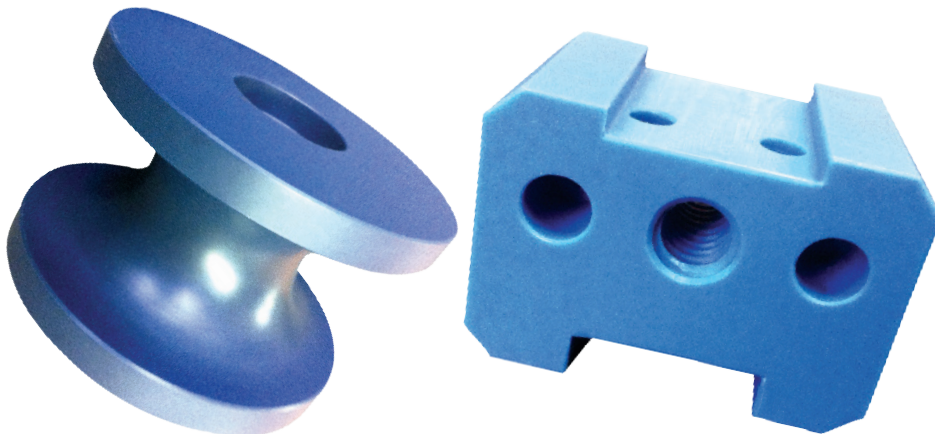
## Nylatech™ BLUE ●

Nylatech™ Nylon Blue was formulated to maintain dimensional stability in applications with higher continuous operating temperatures.

STANDARD COLORS: Blue

### TYPICAL APPLICATIONS:

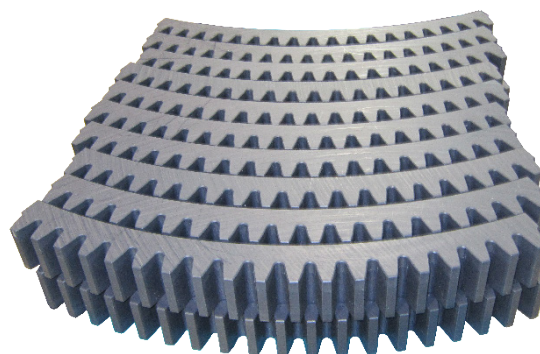
Bushings, rollers, wear pads, wear strips, wheels, gears, and custom components.





## Nylatech™ MD ●

Nylatech™ Nylon MD is a moly-filled (molybdenum disulphide filled) grade resulting in superior wear-resistance allowing for longer part life and decreased mating component wear, resulting in less downtime.



STANDARD COLOR: Dark Grey

### TYPICAL APPLICATIONS:

Sheaves used in the mobile crane industry, bushings, wear pads for telescoping booms, as well as gears and rollers found in numerous material handling systems, etc.

## Nylatech™ NYLON OIL ●

A special formulation of liquid lubricant is encapsulated during manufacturing providing lubrication at the bearing surface. Nylatech™ Nylon Oil is offered for applications where maintenance lubrication is difficult or impossible.

Nylatech™ Nylon Oil also limits moisture absorption, making Nylatech™ Nylon Oil an ideal bearing material for submerged or critical tolerance applications. This grade is also available in Nylatech™ Nylon Natural Oil for food and beverage applications and is U.S.A, F.D.A compliant.



STANDARD COLOR: Olive Green

### TYPICAL APPLICATIONS:

Bearings, bushings, bottling, canning, packing, processing, friction and wear applications in marine environments, gears, sprockets and power transmission components.

## Nylatech™ MD OIL ●

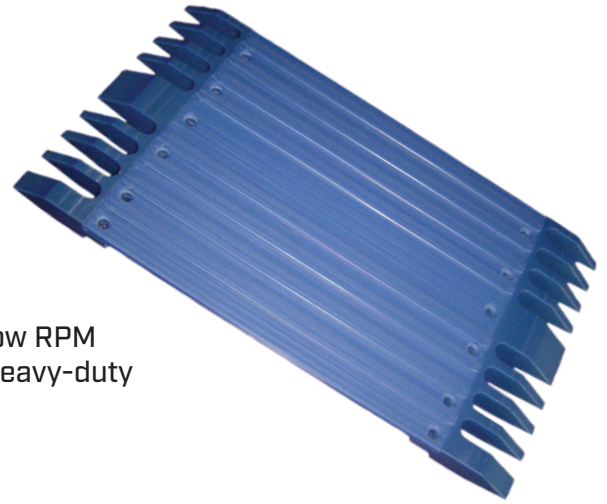
Nylatech™ Nylon MD-Oil filled is one of the most versatile standard grades of Nylatech™ Cast Nylon. Nylatech™ Nylon MD-Oil provides the same high compressive strength and load bearing properties of MD filled, with all the advantages of a liquid lubricant.

Nylatech™ Nylon MD-Oil is especially suited for high load - low RPM applications, but is a superior replacement for MD in many heavy-duty friction generating applications.

STANDARD COLOR: Dark Navy Blue

### TYPICAL APPLICATIONS:

Pillow blocks, trunnion bearings, rope sheaves, pulleys, sprockets, slipper pads, dryer bushings, and custom components.



## Nylatech™ SL ●

Nylatech™ Nylon SL offers a lower dynamic coefficient of friction with superior wear resistance. Nylatech™ Nylon SL is used for complex applications where external lubrication is difficult or impossible. Also providing in excess of 5 times longer part life than other lubricated materials.

Nylatech™ Nylon SL offers significant savings in machine maintenance and downtime costs. As well, it provides added assurance of part life in friction applications where other cast nylons may fail.

STANDARD COLORS: Light Grey

### TYPICAL APPLICATIONS:

Wear strips, bearings / bushings, abrasion pads, rollers, guide rails, star wheels (bottling plants),





## Nylatech™ Nythane

Nylatech™ Nythane has a combination of strength and resilience resulting in a high performance plastic that offers excellent wear and abrasion resistance with rigidity, minimal water absorption and superior impact values. Ideal for harsh environments where excessive weight, water saturation, abrasion, shock, and impact are factors.

## Nylatech™ Nythane

Nylatech™ Nythane displays high load and strength resistance with excellent tensile properties. For use in environments with shock, abrasion, vibration, impact, moisture, and absorption.

## Nylatech™ Nythane Oil

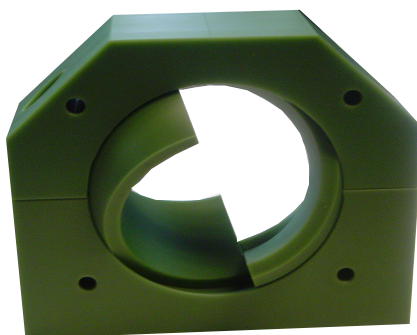
Using the same process as our Nylatech™ Nythane Oil, the impregnated liquid lubrication offers excellent surface lubricity. For use in environments with high wear, increased abrasion, and where moisture is a concern.

## Nythane SL

High impact and wear resistances result in the longest lasting material for the most aggressive industrial applications. For use in environments with extreme wear and abrasion.

### TYPICAL APPLICATIONS:

Wear Plates, dock fenders/pads, valve seals, sprockets, bearings, bushings, sheaves, washers, spacers, insulators, clevis pins, ring gears, barker parts, canter parts, carriage parts, gland bushings, sliding bearings, chip-n-saw parts, forklift mast slides, log handling parts, bushings for cylinders, tubes, and custom components.





## Nylatech™ POWER 6 ●

Nylatech™ Power-6 offers the load bearing capacity of steel with the abrasion resistance, wear resistance and noise reduction of nylon. In demanding applications where the load bearing capability of steel is required, such as a keyway in a sprocket, Power-6 is the answer.

Nylatech™ SL, Nylatech™ Oil, Nylatech™ Nythane (010, 015, 020, 025), or standard grades can be produced with a variety of core materials, including aluminum, mild steel, stainless steel, bronze and more, to suit any application.

STANDARD COLOR: Varies

TYPICAL APPLICATIONS:  
Drive gears and sprockets, high load rollers, and wheels.



## Nylatech™ GLASS FILLED ● ○

Nylatech™ Glass Filled Nylon offers increased strength, wear, stiffness, creep resistance, and dimensional stability from standard nylon. It also possesses a higher short-term temperature resistance. This grade is often used in prototype and development work where injection molded parts would be cost prohibitive.

STANDARD COLOR: White and Black

Typical Applications:  
Applications where stiffness, rigidity, and dimensional stability is a concern, such as seals.





## Nylatech™ PVM ●

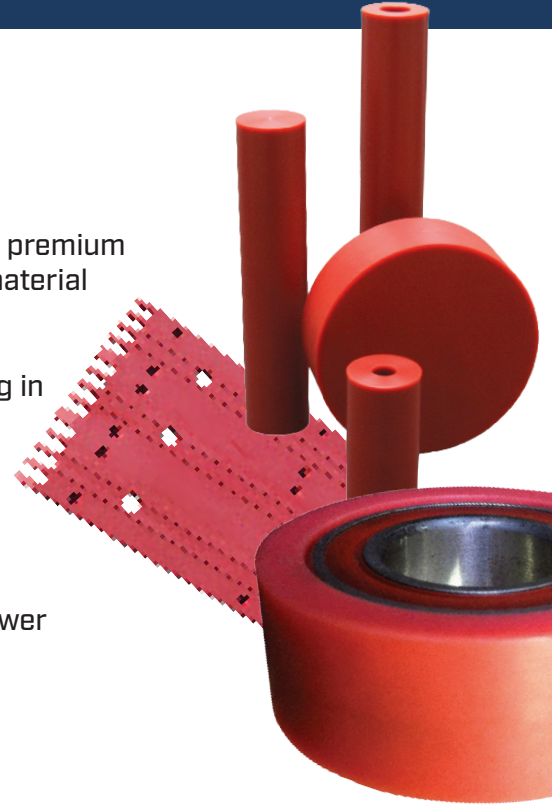
Nylatech™ PVM (pressure/velocity/maximum) was developed to provide a premium material for a variety of applications. Nylatech™ PVM is a self lubricated material with a low coefficient of friction that can increase the life of equipment.

Nylatech™ PVM offers exceptional PV (pressure x velocity) values resulting in an excellent material for tough load bearing/frictional applications.

STANDARD COLOR: Red

### TYPICAL APPLICATIONS:

Bearings, bushings, wear pads, sharp chain beds, gears, sprockets and power transmission components, and custom components.



## Nylatech™ IRG ●

Nylatech® IRG retains the basic physical properties of nylon 6 while fixing its susceptibility to cracking and breaking under high impact loads.

Nylatech® IRG's impact resistance allows it to outperform traditional grades in heavy impact applications such as pile driving cushions. The material can also be used in vibration dampening applications, mechanical stops, or other high impact situations. This material can be produced in rods or discs up to 68" diameter, sheets in up to 7" thick, and tubes up to 48" in diameter.

STANDARD COLOR: Grey

### TYPICAL APPLICATIONS:

Pile driving pads, vibration dampeners, mechanical stop applications, high-impact applications





## MEETING TODAY'S CAST NYLON NEEDS

Nylatech™ Inc. is a Cast Nylon manufacturer that has been producing Nylon 6 and 6/12 stock shapes and custom components since 1995.

We produce sheets, rods and tubes in all standard grades, as well as various specialty grades. To maximize yield and reduce cost, we offer “custom cast sizes” for all our semi-finished stock shapes, including 52” tubular bars that are only manufactured in North America by Nylatech™.

ASK  
AN  
EXPERT

[www.nylatech.com](http://www.nylatech.com)  
1-800-506-9566  
[info@nylatech.com](mailto:info@nylatech.com)



**NYLATECH**

MEETING TODAY'S CAST NYLON NEEDS

